



RFIDClient

User manual

Main Office :

1, rue du Commandant Robert MALRAIT
ZA des Granges BP 30303
27303 BERNAY CEDEX
FRANCE

Tel. : +33(0)2 32 47 83 40

Fax : +33(0)2 32 47 83 50

Web : www.biolog-animal.com

Date	25/01/2019
Version	V3.0EN
Page 2 on 13	

SUMMARY

1	General Presentation	4
1.1	Software Presentation.....	4
1.2	Prerequisites.....	4
2	RfidClient Installation	4
3	Start menu Presentation	5
4	Windows notification area Settings	5
5	Software Language , Reader name Settings.....	6
5.1	Reader name :.....	6
5.2	Software language :.....	6
6	Biolog-Id RFID Reader connection check	7
6.1	RS232 Connection.....	7
6.2	USB Connection	7
6.3	Bluetooth Connection.....	8
7	RfidClient Software Settings.....	8
7.1	Reader Settings.....	9
7.2	Reading Mode Settings.....	10
8	RfidClient Software Usage.....	11
8.1	Entry Mode Usage	11
8.2	Seek Mode Usage	12
9	Annex.....	13
9.1	Association Code or Bluetooth Appairing	13
9.2	Supplementary USB Drivers.....	13

1 GENERAL PRESENTATION

1.1 SOFTWARE PRESENTATION

Biolog-animal offers many solutions to identify, trace animals or collect specific data on their lifestyle.

- Biolog-Id® RfidClient is an automated Rfid tag capture software.
- Associated with a Biolog-Id® reader (USB or Bluetooth), this software will simplify the data field filling of various professional software.
- Includes Excel Macros simplifying Id search in a list or a no duplicate security.

1.2 PREREQUISITES

The software RFIDClient works on Windows XP, 7, 10 environments.

It needs :

- Microsoft Framework 2.0 Installation (included in installation package)
- A RFID Reader (model PRD640, PRD642, PRD651, RS10, RS100, RS1000,...) connected to computer via USB, RS232 or Bluetooth.
- Microsoft Office Excel 2007, 2010, or more recent for data entry macro.

2 RFIDCLIENT INSTALLATION



Important : Launch setup.exe as administrator :

To do this, right click over setup.exe and choose « run as administrator », then follow instructions on screen.

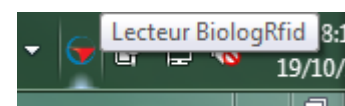
You will have the possibility during installation to customize your Rfid reader name (without space).

Once installation ends, the software starts automatically.

If this is the first installation, the software will indicate you a unique code that you will have to transmit us in a way to give you back the software unlocking key. You can contact us with a phone call on +332.32.47.83.47 or with the email support@biolog-id.com

Once the code is set, the software will be completely unlocked and the code will be recorded.

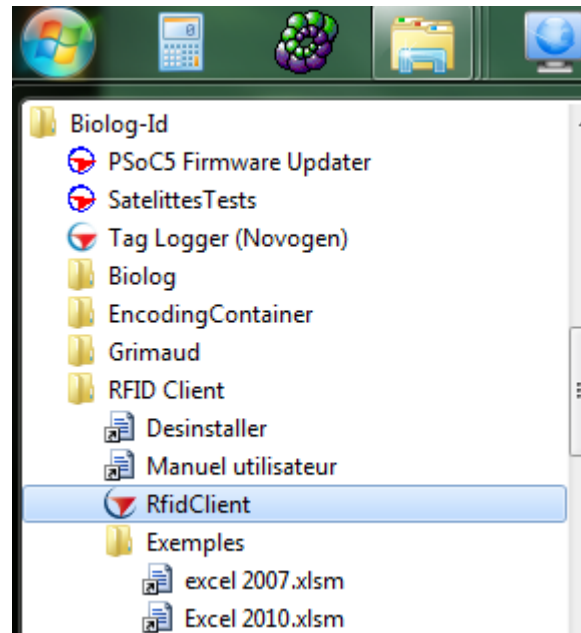
It will appear in the Windows notification area like this :



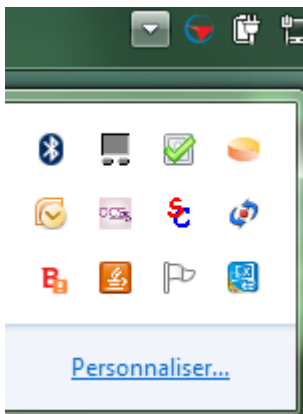
3 START MENU PRESENTATION

The software RfidClient is automatically added to your start menu in « all programs », « Biolog-Id », « RFID Client ».

In « Exemples », you will find the Excel macro that you can use for ID seeking or no duplicate security.



4 WINDOWS NOTIFICATION AREA SETTINGS

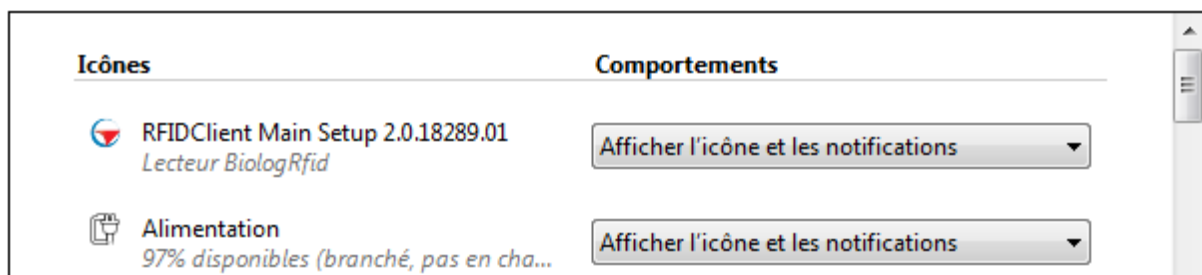


In a way to ease software usage, it's strongly recommended to modify the icon display in the Windows notification area.

To do this, click on « customize », and face to RFIDClient, choose « Show icons and notifications »

Sélectionnez les icônes et les notifications qui apparaissent sur la barre des tâches.

Si vous masquez des icônes et des notifications, vous ne serez pas averti des modifications et mises à jour. Pour afficher les icônes masquées, cliquez sur la flèche près de la zone de notification sur la barre des tâches.



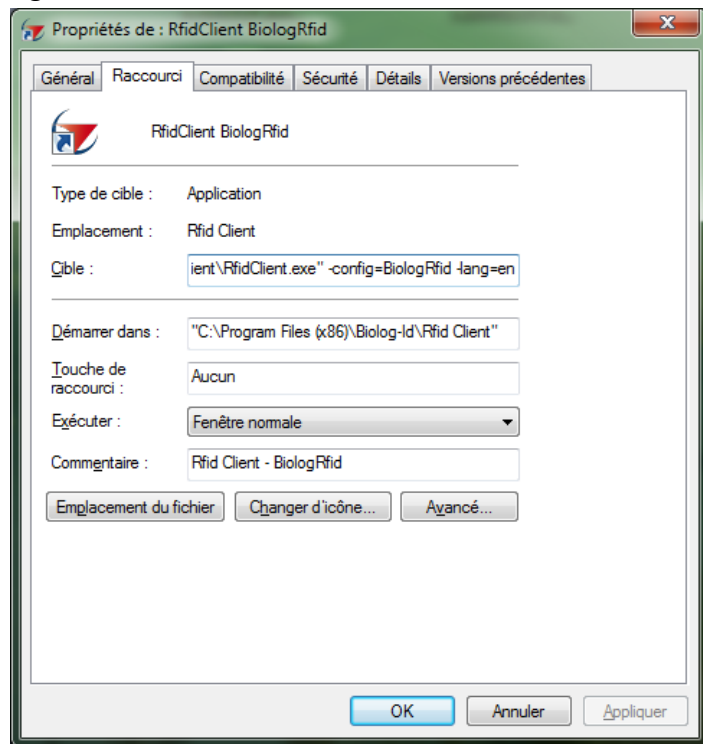
5 SOFTWARE LANGUAGE , READER NAME SETTINGS

After installation, an icon RfidClient is created over the desktop.



In a way to modify the language or the reader name, it's necessary to quit the software RfidClient, by clicking right on the Biolog icon in the Windows notifications area and choose "Quit"

Open the shortcut property on the desktop, Click right on Biolog-ld icon and "property", then select the tab "shortcut".



Two parameters can be modified :

5.1 READER NAME

-config= « Customize name of your reader » (without space)

Ex : - config=BiologRfid

5.2 SOFTWARE LANGUAGE

-lang= « 2 first letters of desired language »

Ex : -lang=en (for English language)

Bellow the different languages available for RfidClient :

French	-lang=fr
English	-lang=en
Spanish	-lang=es
German	-lang=de

6 BIOLOG-ID RFID READER CONNECTION CHECK

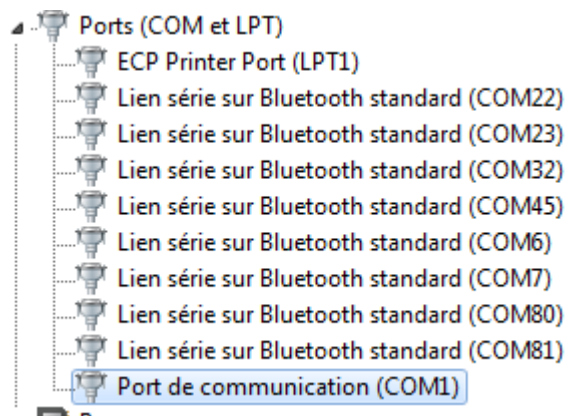
For a start, we need to have a RFID reader connected to the computer and correctly recognized by Windows.

Readers communicate through COM ports:

- Real RS232 (old computer only)
- Virtual (USB or Bluetooth)

In all case, COM ports are checkable in Windows Devices Manager in the tab : Ports (COM and LTP)

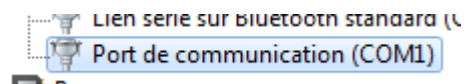
It's very important to keep in mind the COM port number that Windows attributes to the Rfid reader, you will have to indicate it to the software RfidClient later.



6.1 RS232 CONNECTION

RS232 Ports appears directly under the name « communication port »

No recognition or driver is necessary in this mode.

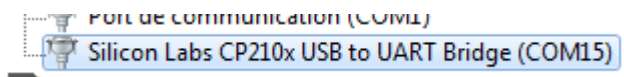


6.2 USB CONNECTION

USB COM ports appear at the same place, on some systems, it will be necessary to install the driver below, on others, Windows will detect and install it automatically.

https://www.silabs.com/documents/public/software/CP210x_Universal_Windows_Driver.zip

Once recognized, the reader is shown like this :

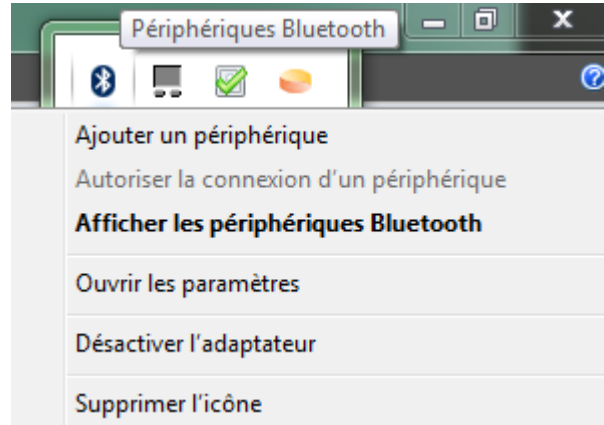


6.3 BLUETOOTH CONNECTION

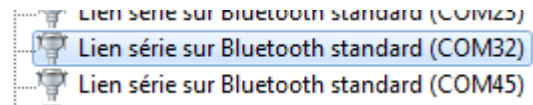
Bluetooth COM ports appear at the same place, Windows will find automatically the driver.

It will be necessary to associate your Rfid reader to your computer with the Bluetooth menu.

- Add a device
- Find the reader in the list
- Pairing the reader with the code supplied in Annex part
- The COM Port will be installed automatically



Once recognized, the reader is shown like this :



If you encounter some difficulty with Bluetooth,

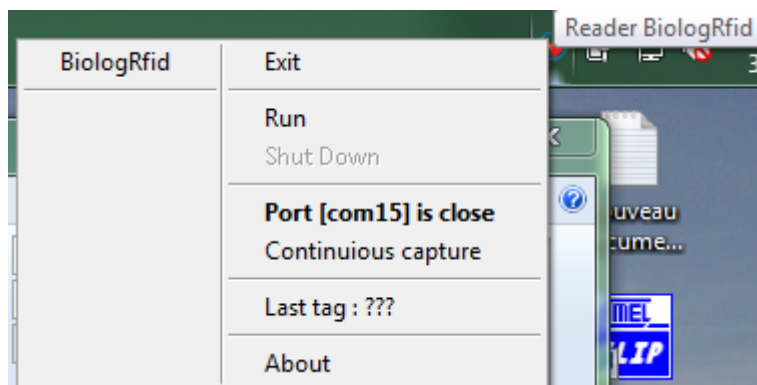
We advise to update your Bluetooth driver directly to your computer builder website.

7 RFIDCLIENT SOFTWARE SETTINGS



RfidClient software will appear in the task bar with this icon.

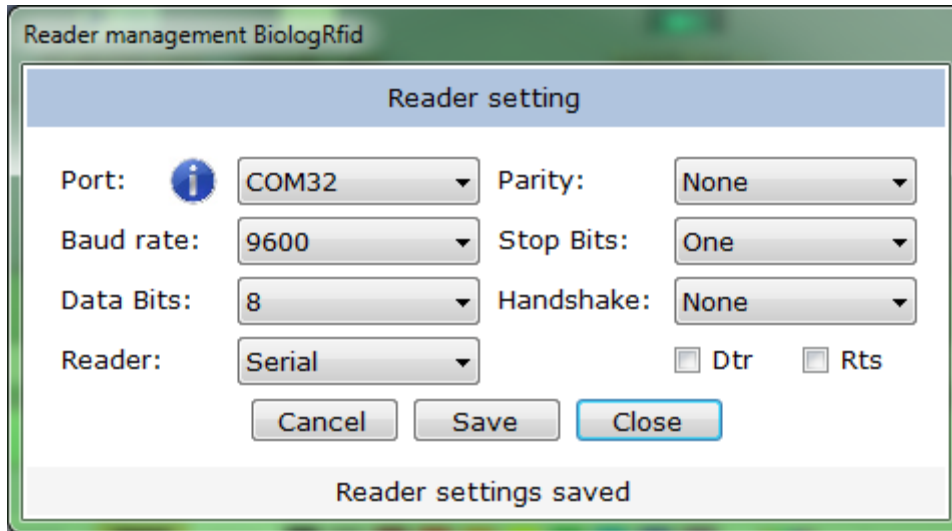
A right click on this icon will permit you to access all functionalities.



7.1 READER SETTINGS

The software chooses by default the first COM port available.

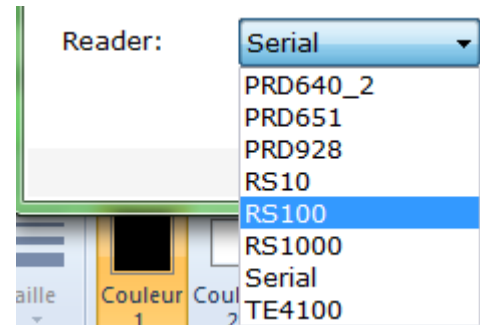
By clicking on the line « Port [comxx] is closed/open », the window Reader management setting will show.



Port : you can select the COM port that Windows attributes earlier to the Rfid reader.

Reader : Choose in the list the reader model in your possession.

Other settings are default value, it is not necessary to modify this value in a classic configuration.

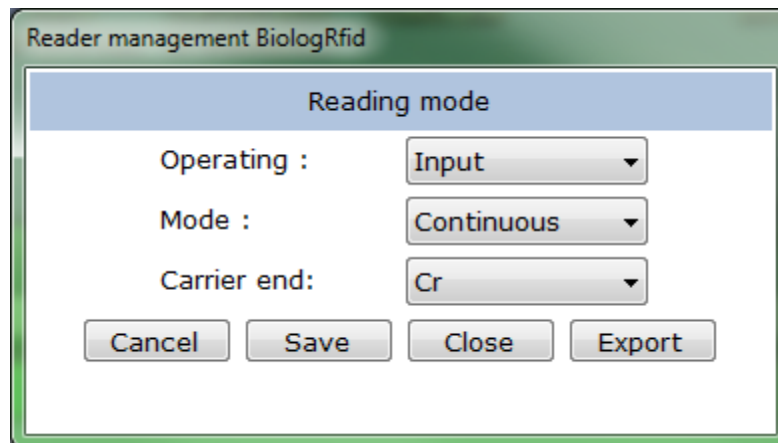


You can « cancel » or « save » the settings chosen, it will be recorded.

7.2 READING MODE SETTINGS

The software chooses by default the continuous reading mode.

By clicking on the line « Mode distinct/continuous », the window Reader mode setting will show.



Operating :

- Input : Transmits the Rfid code received directly in the active document
- Search : Needs to open the Excel Macro file

Mode :

- Continuous : Accepts all ID
- Distinct : Accepts ID that are not been already read

Carrier end :

- None : adds no special character at the line end
- CR : adds a « carriage return » or « enter » at the end of ID
- LF : adds a « line feed » or « line jump » at the end of ID
- CR LF : adds a CR and a LF
- Tab : adds a tabulation at the end of ID

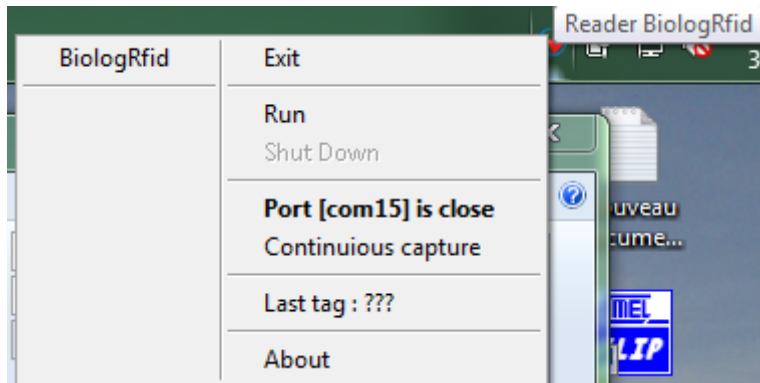
You can « cancel » or « save » the settings chosen, it will be recorded.

The button « export » permits to save the setting in a file.

8 RFIDCLIENT SOFTWARE USAGE

8.1 ENTRY MODE USAGE

Open a worksheet, a text file, a spreadsheet, or another program in which you want to fill the data input.



Click on « Run » to open selected COM port.

Thenceforth, all scanned ID will be written at the place selected by your cursor.

No double check or Seeking are possible in the mode « input ».

To avoid untimely data entry, we advise to click on « Shutdown » at the usage end.

8.2 SEEK MODE USAGE

Open the Excel macro file matching with your office version (see Start menu).

Read IDs will be in the A column. The last read ID appears in C1.

	A	B	C	D	E	F	G
1	Tag Lu		955000003842353			<input type="checkbox"/> Ajout Automatique	
2							
3							
4							
5		1					
6		2					
7		3					
8		4					
9		5					
10		6					
11		0					
12	955000003842353						
13							

Check box Ajout automatique (automatic adding) : Each unknown ID is added to the list.

Tooltip :

- indicates hour of last scanned ID,
- indicates if the ID is found in the list (column A),
- indicates if the ID has been added to the list.

The Excel file and the macro can be customized as you wish, you can adapt it to your formatting. Remember to record your modifications in your work folder (in a way to avoid overwriting original file).

Click on « Run » to open selected COM port.

Thenceforth, All scanned ID will be transmitted to the box C1 and the macro will check the presence of this ID in the list column A, it will be :

- localized if the ID is found
- add at the end of the list if the ID isn't found

To avoid untimely data entry, we advise to click on « Shutdown » at the usage end.

9 ANNEX

9.1 ASSOCIATION CODE OR BLUETOOTH APPAIRING

You will find here all association codes for Biolog-Id Rfid reader :

Model	Bluetooth Name	Bluetooth Code
RS10		0000
RS100	HC-06	1234
RS1000	AFX_110	0000
PRD_643	HC-06	1234
PRD_642	WT12-A	none

9.2 SUPPLEMENTARY USB DRIVERS

PRD 642 -> driver USB FTDI

RS et 643 -> driver USB CP210x

All supplementary drivers may be downloaded on our website :

<http://www.biolog-animal.com/telechargements/>